

**ADJUSTED Metro Toledo**  
(Lucas, Wood, Fulton counties)

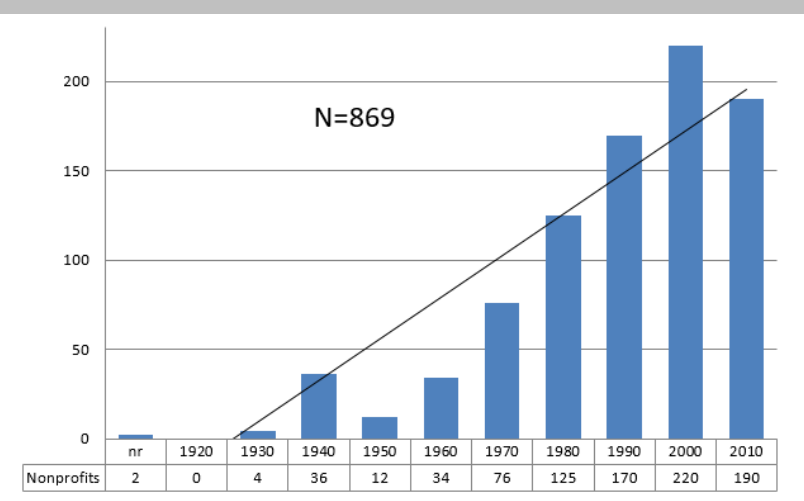
**NONPROFIT LANDSCAPE KEY INDICATORS**

as of 12-31-18

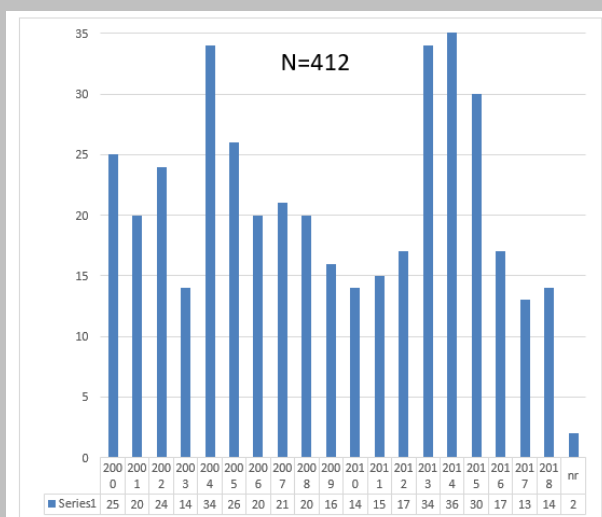
501(c)3 organizations **869**  
Total 2017 Revenue **\$545M**  
Total 2017 Contributions **\$291M**

**501(c)3 Ruling Date**

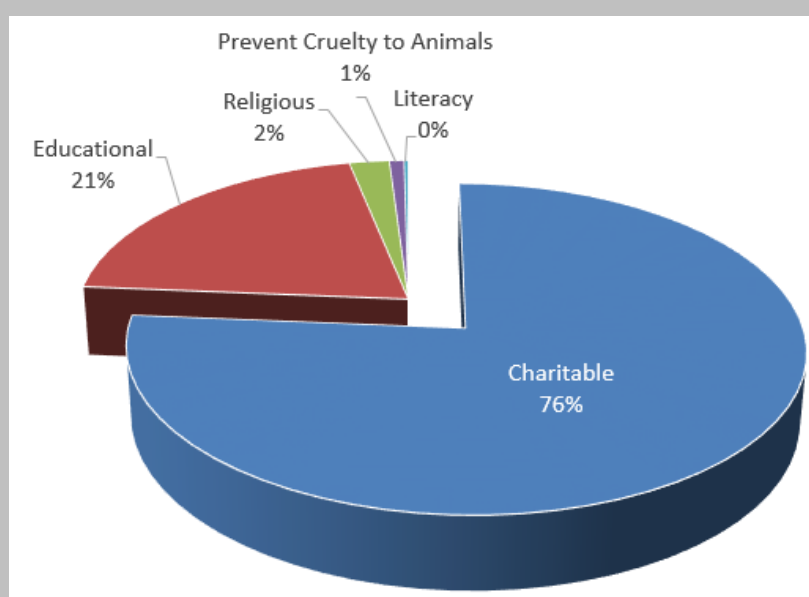
1920s to 12-31-18



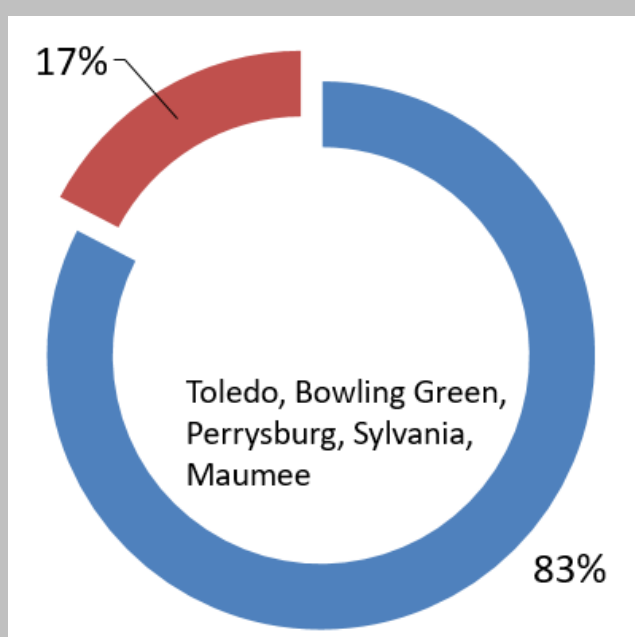
01-01-00 to 12-31-18



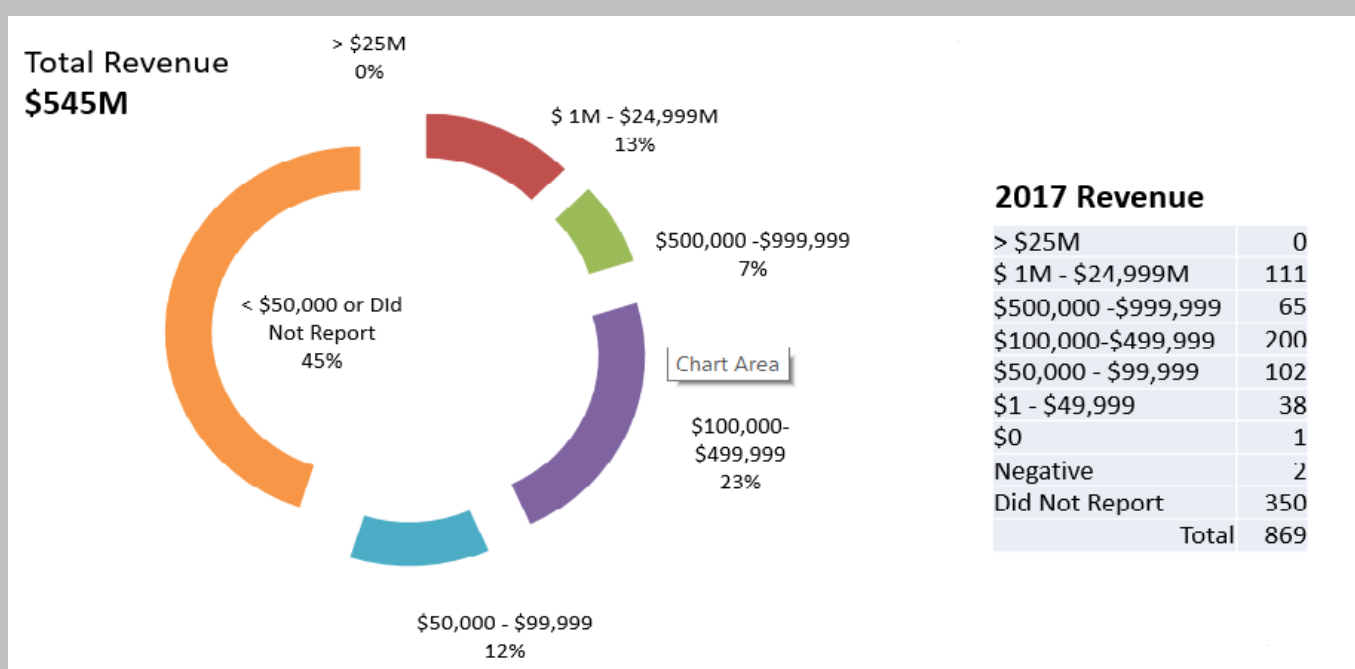
**Classification**



**Geography**



**2017 Revenue**



**2017 Contributions**

